

## Drawer Removal and Fitting

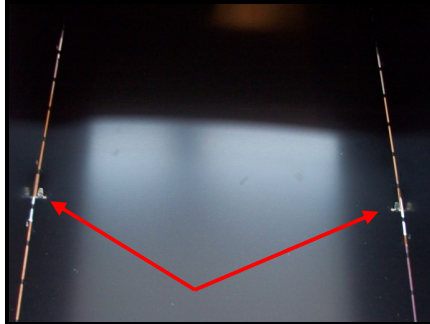
(PFA Home Filer)



### Drawer Removal



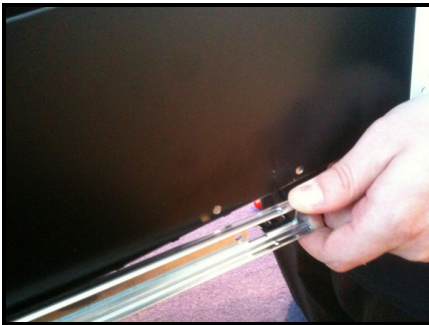
To remove drawers from a Home Filer first open fully the drawer you wish to remove.



The drawer is held in place by a small metal tab on each of the runners which slot into small cut outs in the base of the drawer.



To remove the drawer lever the runner away from the drawer body which we will make the small tab slide outwards...



...once the tab reaches the side of the drawer lift the front of the drawer upwards and runner should come away.  
*Repeat this on both sides*



Once the runners are detached from the drawer you can lift the drawer upwards and pull out of the unit.

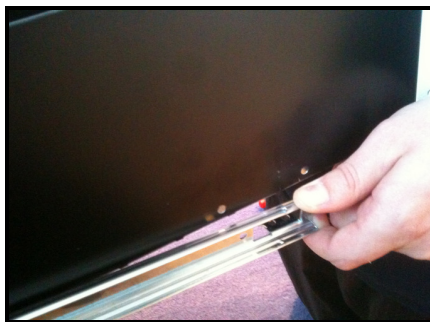
### Drawer Fitting



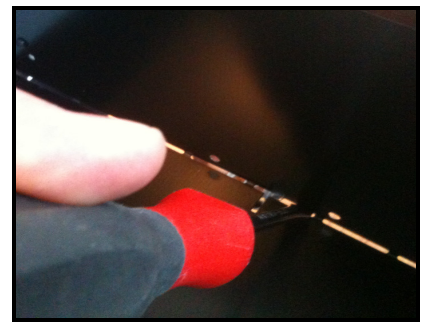
To fit the drawer first fully extend both runners



Fit the drawer back into place by sitting on the runners and pushing back towards the unit



Position the metal tabs on each runner in line with the cut outs in the drawer



Slot the metal tabs on the runners back into the cut outs.  
*You may need to use a flat head screwdriver to help lever back in.*