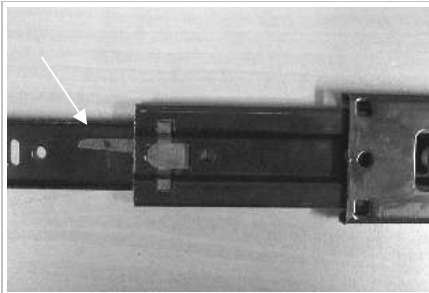


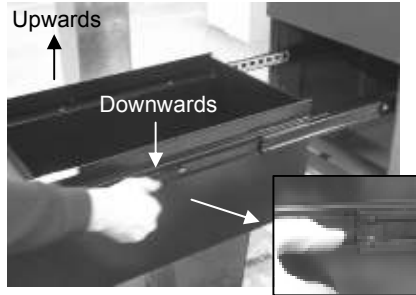
**PEDESTALS
(Removal & Fitting of File Drawer)**



DRAWER REMOVAL & FITTING: Make sure the drawer is unloaded & extend fully:



On either side of the extended part of the slide is a plastic release clip.



Push the right hand release clip downwards, while pushing the left hand side release clip upwards, and pull the drawer away from the cabinet.
(Supporting the weight of the drawer)



Right hand slide inner member



To fit: Support the weight of the drawer while you re-align both slide inner members into the slide centre member bearing cages, and push the drawer shut. (This can be awkward until practised)



Make sure the locking bar pin is held in the raised position, while the drawer is pushed in.

REMOVING SLIDE INNER MEMBERS FROM DRAWER: Make sure the drawer is empty:

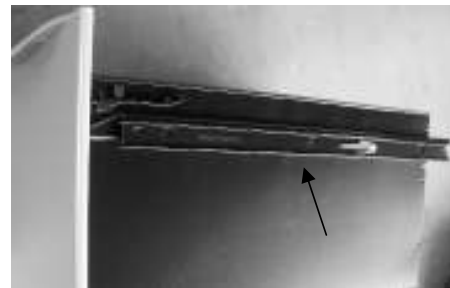
Internal View



Front Tag Lancing Pip



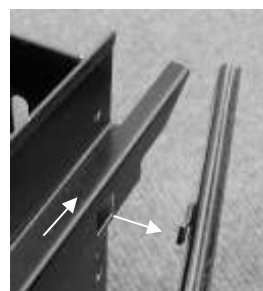
1. Using a slot headed screwdriver lever the slide retaining pip away from the slot in the drawer body.



Right hand side suspension slide inner member fitted to the drawer body.

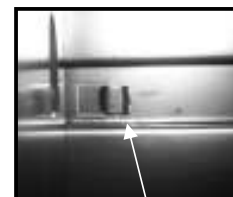


2. Push the front of the slide down to release the front 'tag lancing'.



3. Push the slide backwards, and outwards to release rear 'tag lancing'.

Internal View



Rear Tag Lancing