



Removal and Fitting of Drawers

BS Flush Front Filing & Classic Front Cabinet
(New Style Slides - Oct 2010 onwards)

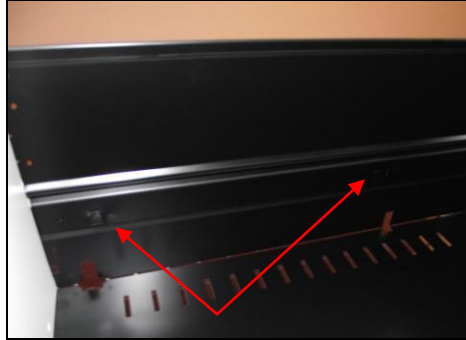


Drawer Removal

Please ensure that the drawer is unloaded prior to removal



Fully extend the drawer.



Look inside and take note of how the runners are fitted to the drawer, there is a front and rear tag lancing on each side.



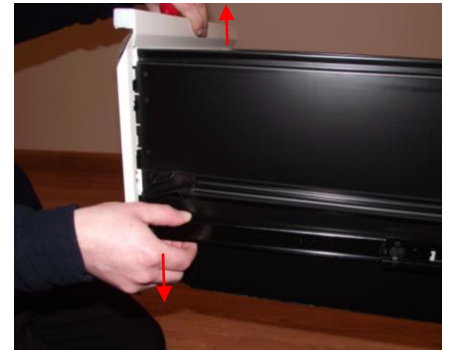
And also a retaining 'pip' at the front (this prevents the drawer coming off of the runners accidentally)



Insert a flat head screwdriver underneath the front of the runner as shown. You could also insert from the top whichever you find easier.



You need to lever the runner member away from the drawer body as shown thus negating the retaining pip.



The drawer is then free to be lifted upwards off the front tag lancing



Repeat this on the opposite runner so that you have the drawer free of both front lancements.
(Support the weight of the drawer)



You can then pull the drawer towards you away from the rear lancements



And clear of the unit the unit.
(Take care when removing anti-tilt rods)

Drawer Fitting



Extend both drawer runners fully.



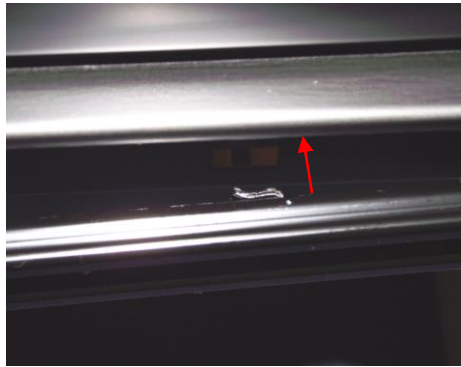
Gently lower the drawer in between the runners.



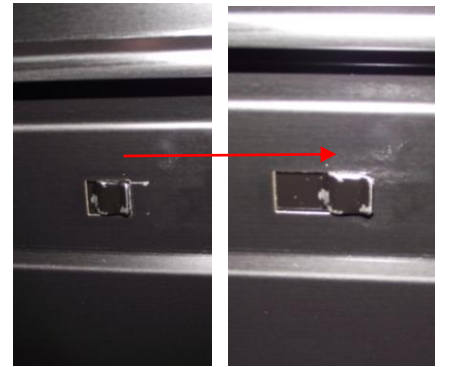
When fitting a drawer it is important that the ridge on the right hand side of the drawer is underneath this locking pin.



To do this tilt the drawer backwards as far as possible and place the ridge beneath the pin. You can use a screwdriver to lift the locking pin slightly if you are having trouble.



You can then reattach the runners to the drawer starting with the rear tag lancing. Insert the lancing into the hole in the drawer body



Once inserted pull the runner forward which will lock the rear of the drawer into the runner. Repeat this on the opposite runner so that you have both rear lancements fitted.



You can then reinsert the front lancements into each side of the drawer....



... and push downwards to lock into place. The retaining pip should then rest into its cutout.



Close the drawer fully and check the locking.